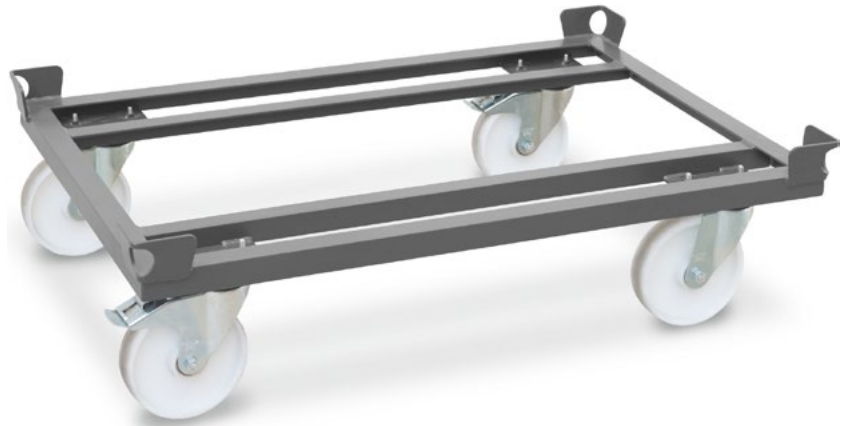


Trolley for large load carriers (LLC)

Suitable for all Jungheinrich trailers

Available in several sizes and load capacities



Trolley for GTE and GTP

(600/1,000/1,200/1,600 kg)

Trolleys are used to transport large load carriers (LLC) in a tugger train, such as pallets or mesh boxes. In order to be able to handle the large load carriers at the destination without the use of additional equipment, it is possible to move the LLC manually with the trolleys. The trolleys are perfectly matched to the Jungheinrich GTE and GTP trailers.

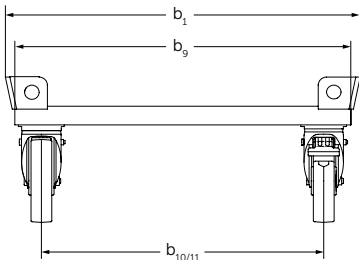
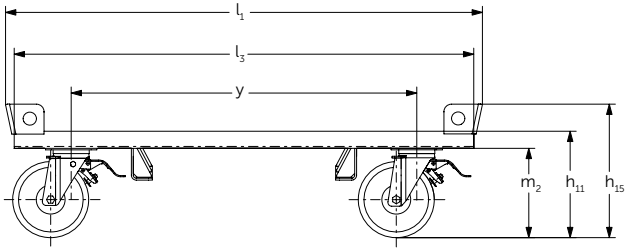
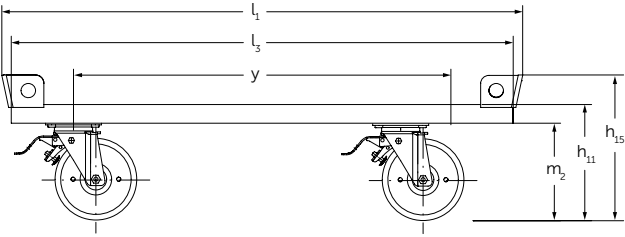
The LLCs are placed on the trolleys, pushed into the trailers and mechanically locked. During travel, the trolleys are raised by the trailers, so that they do not run on their own wheels. This principle has the following advantages:

- Low roll resistance: The wheels of the trolleys have optimised roll resistance due to the ball bearings and hard tread. When pushed manually, therefore, only low forces are required.

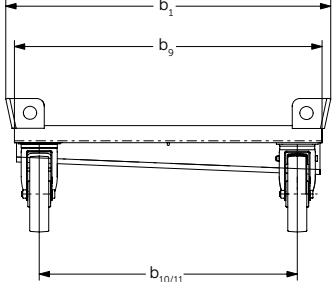
- Quiet operation: During travel, hard rollers are too loud and wear too quickly. When raised in the trailers, the trolley wheels are not under load. The trailer wheels are designed for driving, so they are quiet and low-wear.
- Precise lane guidance: The frame of the trailer allows for much more precise lane guidance. In contrast, trolleys with four steering rollers have no lane guidance.
- Easy to use: Thanks to their lifting platform, the GTE trailers also allow for the easy insertion and removal of the trolleys.

The Jungheinrich trolleys are therefore the ideal addition to the GTE and GTP tugger train trailers.

Trolley for GTE and GTP



Trolleys for GTE 212/312, GTP



Trolley for GTE 106



Technical data in line with VDI 2198

			Jungheinrich									
			RW 0,6t 1200 x 800	RW 1,0t 1200 x 800	RW 1,2t 1200 x 800	RW 1,6t 1200 x 800	RW 0,6t 1200 x 1000	RW 1,0t 1200 x 1000	RW 1,2t 1200 x 1000	RW 1,6t 1200 x 1000		
Identification	1.1	Manufacturer (abbreviation)										
	1.2	Model										
	1.3	Drive	manual									
	1.5	Load capacity/rated load	Q	t	0.6	1	1.2	1.6	0.6	1	1.2	1.6
	1.9	Wheelbase	y	mm	910							
Weights	2.1	Service weight		kg	45	36	36	36	48	38	38	38
Wheels / frame	3.1	Tyres	Nylon									
	3.2	Tyre size, front		mm	200 x 50							
	3.3	Tyre size, rear		mm	200 x 50							
	3.5	Wheels, number front/rear (x = driven wheels)			2 / 2							
	3.6	Tread width, front	b ₁₀	mm	683	683	683	683	883	883	883	883
Basic dimensions	4.2.1	Total height	h ₁₅	mm	351							
	4.18	Loading area width	b ₉	mm	810	810	810	810	1,010	1,010	1,010	1,010
	4.19	Overall length	l ₁	mm	1,256							
	4.21	Overall width	b ₁ /b ₂	mm	856	856	856	856	1,056	1,056	1,056	1,056
	4.32	Ground clearance, centre of wheelbase	m ₂	mm	235							
4.38.12	Platform length	l ₃	mm	1,210								
Perform- ance data	5.10	Service brake			optional							

Benefit from the advantages



Available in several sizes and load capacities



Options handle bar and increased height



Option closed floor



Trolley for GTE 106

Standard equipment

- 4 steering rollers, of which 2 diagonally braked with wheel locks.
- Large wheels made of polyamide with ball bearings for easy manual pushing.
- An ESD wheel with electrical conductivity.
- Frame in Jungheinrich anthracite.

Ergonomics

The trolleys offer various facilities which make it easier to handle heavy and

awkward loads:

- Attachable handles provide grip at an ergonomic height.
- Beam extensions make it easier to access loads without having to bend over.
- Lockable steering roller for directional stability when pushing manually.

Options

Different options are available:

- Loads for 600 kg, 1000 kg, 1200 kg and 1600 kg.

- Dimensions in 800 x 1200 mm and 1000 x 1200 mm.
- Trolleys for the mechanical GTE 106.
- Clip-on push handle.
- Parking brake with fixed brake pedal.
- Locking rollers for easier handling of heavy loads.
- Beam extension for ergonomic unloading of large load carriers.
- Closed floors, so that small parts are not lost.
- Special colours.

Jungheinrich Aktiengesellschaft

Friedrich-Ebert-Damm 129
D-22047 Hamburg
Telephone +49 40 6948-0
Telefax +49 40 6948-1777

info@jungheinrich.com
www.jungheinrich.com

The German production facilities in Norderstedt, Moosburg and Landsberg are certified. **ISO 9001**
ISO 14001

Jungheinrich fork lift trucks meet European safety requirements.



JUNGHEINRICH
Machines. Ideas. Solutions.